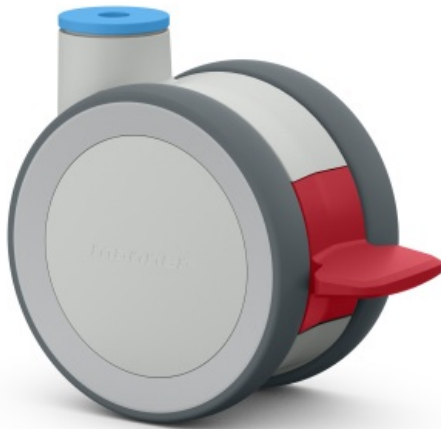


# TW-J-S-100 GP/K H IX 305172



<b>Product type:</b>	Swivel castors with brake
<b>Product group:</b>	Twist
	Stainless

The high-quality Twist twin wheel castor is load-bearing and very sturdy yet easy to manoeuvre. Its special feature is the intuitive brake pedal, which clearly shows the status of the locking system and is easy to use. Two different heights make it easier to meet customer- and device-specific requirements. The timeless and clinical appearance of the Twist castor looks hygienic and high quality. The standard colour of the castor is light grey (RAL 7035) with a red pedal. Customer-specific and special colours are also available for orders of larger quantities.



[www.manner.fi/en/tuote/tw-j-s-100-gp-k-h-ix](http://www.manner.fi/en/tuote/tw-j-s-100-gp-k-h-ix)

## Technical data

 Wheel diameter (mm):	100	<b>Sh A</b> Hardness of the tread (shore A):	95
 Wheel width (mm):	20	 Centre material:	Polyamide
 Load capacity (kg):	125	 Bearing type:	Ball bearing
 Overall height (mm):	118	 Fitting:	Bolt hole
 Swivel radius (mm):	113	 Bolt hole diameter (mm):	10
 Weight (kg):	0.6	 Fork material:	Plastic
 Brake type:	Total-stop brake	 Brake control:	Individual
 Color:	Light grey	 Bore length (mm):	
 Special features:	Stainless	 Tread material:	Polyurethane